

5 reasons the singularity IS NOT NEAR

1

Extraordinary claims require extraordinary evidence

The singularity hypothesis is an extraordinary claim and should require correspondingly extraordinary evidence.



2

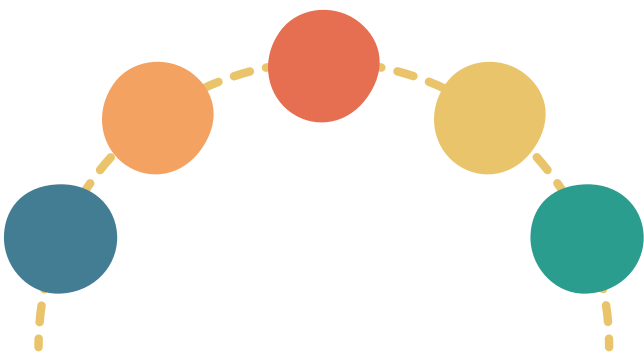
Diminishing research productivity

Improving machine intelligence becomes harder the more intelligent a machine becomes.

3

Bottlenecks

A single bottleneck (energy, heat dissipation, software ...) can halt growth.



4

Physical limits

Limitations will be hit, including laws of physics and resource scarcity (minerals, energy, ...)

5

Intelligence grows sublinearly with hardware improvement

Improving hardware is hard enough. Improving machine intelligence is still harder.

